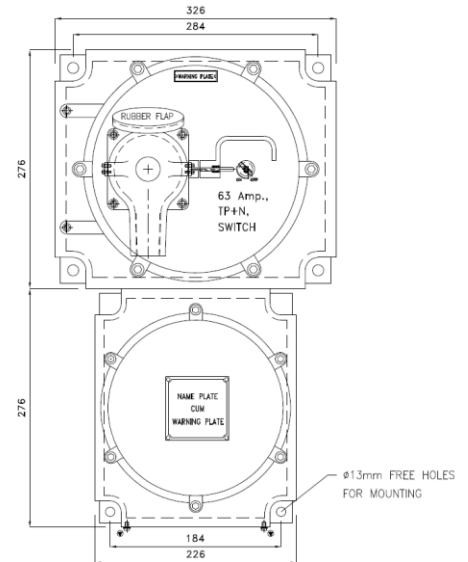




DATA SHEET FOR FLP SWITCH SOCKET (UP TO 250 A)

TECHNICAL DATA:

PRODUCT	: CAT. NO. RCP/2C/2022
ENCLOSURE	: FLAME PROOF (Ex -d), Gas Group IIA, IIB, IIC As per IS/IEC 60079-1 : 2014
PROTECTION	: WEATHER PROOF IP - 66 AS PER IS/IEC 60529:2001 (Reaffirmed 2014)
AREA CLASS	: Ex db IIC T6 Gb (EX tb / tc IIIC T85 C Db/Dc (ZONE 1 & 2 & Zone 21 & 22)
CERTIFICATION	: CIMFR, BIS, PESO
TEMP CLASS	: T 6
MATERIAL	: DIE CAST ALUMINIUM ALLOY
FINISH	: EPOXY POWDER COATED SHADE AS PER IS : 5
EARTHING	: 1 No INTERNAL & 2 No's EXTERNAL
HARDWARE	: STAINLESS STEEL
GASKET	: 'O' RING ENDLESS GASKET NEOPRENE / SILICON
NAME PLATE	: SS NAME PLATE CUM WARNING PLATE
SWITCH	: UP TO 250 AMP
SOCKET	: UP TO 250 AMP
PLUG TOP	: UP TO 250 AMP (4P + E)
INTERLOCK	: INTERLOCKING ARRANGEMENT SUCH AS THE PLUG CAN NOT BE REMOVED WHEN THE SWITCH IS IN "ON" POSITION AND CAN BE WITHDRAW ONLY WHEN THE SWITCH IS IN "OFF" POSITION

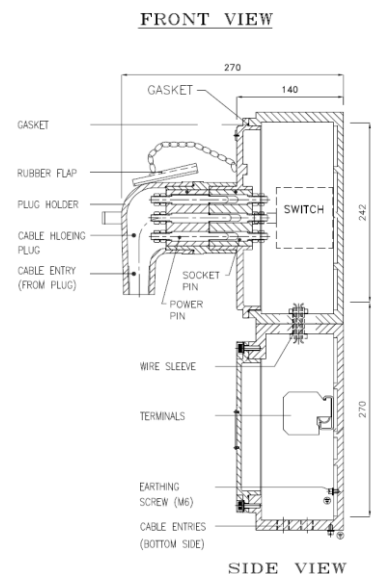


OPTIONS

SR. NO	PARTICULAR	OPTIONS
1.	MATERIAL OF CONSTRUCTION	STAINLESS STEEL
2.	GLAND & PLUG	BRASS / SS / ALUMINIUM
3.	COLOUR SHADE	631, 632, 355, 7031, 7032 etc.
4.	ENTRIES / TERMINAL	AS PER RATING OF SOCKET
5.	CANOPY	M.S POWDER COATED / FRP / GI

SELECTION CHART

SR. NO	AMP	PIN	VOLTAGE	ENTRY		
				BOTTOM	PLUG TOP	TERMINAL
1.	63 AMP	4P + E	415 V AC	2 X M40 / 1 1/2" NPT / 1 1/2" ET	1 X M32	50 SQ.MM
2.	100 AMP	4P + E	415 V AC	2 X M40 / 1 1/2" NPT / 1 1/2" ET	1 X M32	70 SQ.MM
3.	125 AMP	4P + E	415 V AC	2 X M40 / 1 1/2" NPT / 1 1/2" ET	1 X M32	70 SQ.MM
4.	200 AMP	4P + E	415 V AC	2 X M50 / 1 1/2" NPT / 2" ET	1 X M40	90 SQ.MM
5.	250 AMP	4P + E	415 V AC	2 X M63 / 2" NPT / 2 1/2" ET	1 X M40	150-180 SQ.MM



NOTE:- SWITCH SOCKET CAN BE PROVIDED WITH ELCB / RCBO / MCCB COMBINATION AS PER CUSTOMER REQUIREMENT